



ELIT

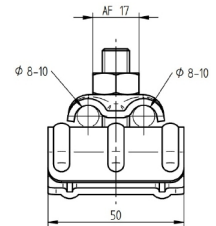
ELIT Gutter bracket made of stainless steel Ø8 - 10 mm

Technical description

Gutter bracket manufactured from stainless steel (V2A) for increased strength and good rust resistance. All components including the screw are V2A. Can be attached to gutters with side edges Ø15 - 20 mm. Screw bracket for down conductors / air-termination conductors Ø8 - 10 mm.

Advantages:

All components including the screw are of stainless steel (V2A)
Has good rust resistance
Fastens to gutters with side edge Ø15 - 20 mm
Screw fastening for conductors Ø8 - 10 mm



Product name/ Art.nr/ GTIN	
ELIT TAKREN-FEST-V2A-Ø8-10MM/ 40170025/ 7070811204020	
According to:	---
Mounting type conductor	With screw clamp
Suitable for diameter round conductor	8 - 10 Millimetre
Material of holder	Stainless steel 304 (V2A)
Mounting type holder	Other
Material of carrier	Stainless steel 304 (V2A)
Material of saddle clamp	Stainless steel 304 (V2A)
Material base part	Stainless steel 304 (V2A)
Thread size (metric)	10
Pipe chucking range	15 - 20 Millimetre
Assembly height conductor holder	55,4 Millimetre